

The Avenue 10

Floor 1 | 69.09m² – 743.68ft²

Kitchen

3180mm x 3029mm
10'5" x 9'11"

Sitting Room

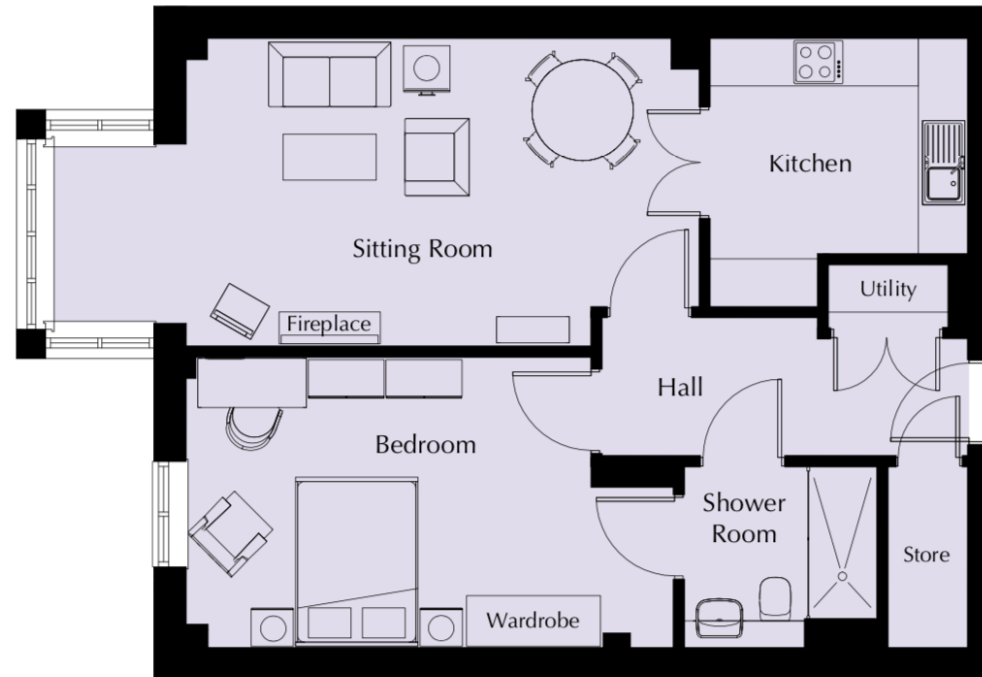
3650mm x 7671mm
20' x 25'2"

Bedroom

5782mm x 3415mm
19' x 11'2"

Shower Room

2300mm x 2180mm
7'7" x 7'2"



These particulars are intended to give a fair and substantially correct overall description.

Measurements have been taken at 1500mm skirting height.

All dimensions are approximate. Bedroom measurements include the wardrobe if applicable. Room measurements include bay windows if applicable.

Furniture layout is to give an indicative impression. Although all efforts have been made to ensure its accuracy at time of print dimensions, fixtures, fittings, finishes and specifications are subject to change without notice.

