

# 34 Village Suite

First Floor | 545ft<sup>2</sup>

## Kitchen

2300mm x 2180mm  
7'7" x 7'2"

## Sitting Room

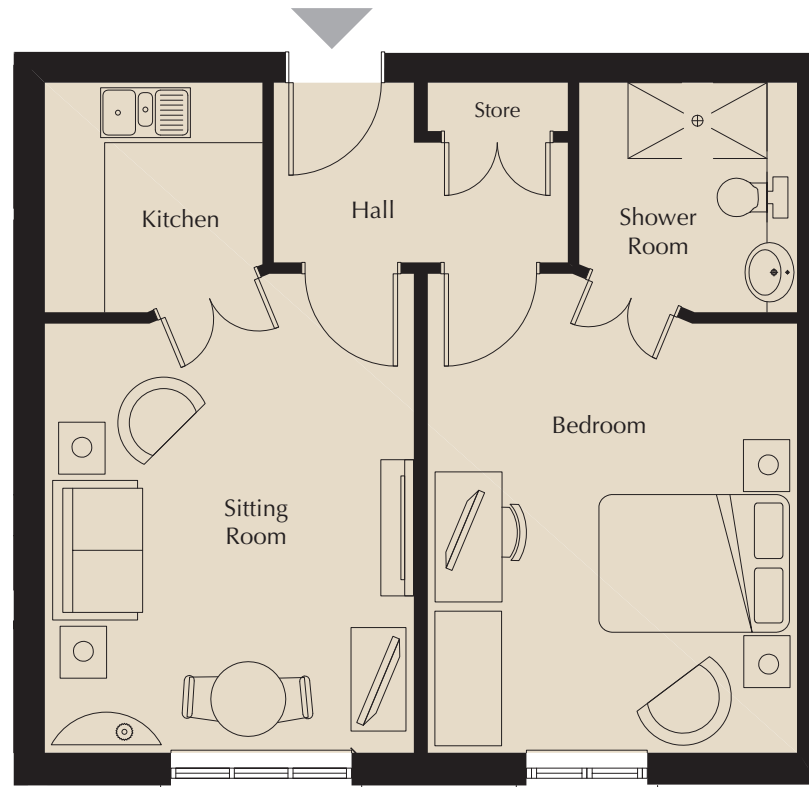
4800mm x 3698mm  
15'9" x 12'2"

## Bedroom

4800mm x 3698mm  
15'9" x 12'2"

## Shower Room

2300mm x 2180mm  
7'7" x 7'2"



These particulars are intended to give a fair and substantially correct overall description.

Measurements have been taken at 1500mm skeliling height.

All dimensions are approximate. Bedroom measurements include the wardrobe if applicable. Room measurements include bay windows if applicable.

Furniture layout is to give an indicative impression. Although all efforts have been made to ensure its accuracy at time of print dimensions, fixtures, fittings, finishes and specifications are subject to change without notice.

The properties are sold unfurnished.

