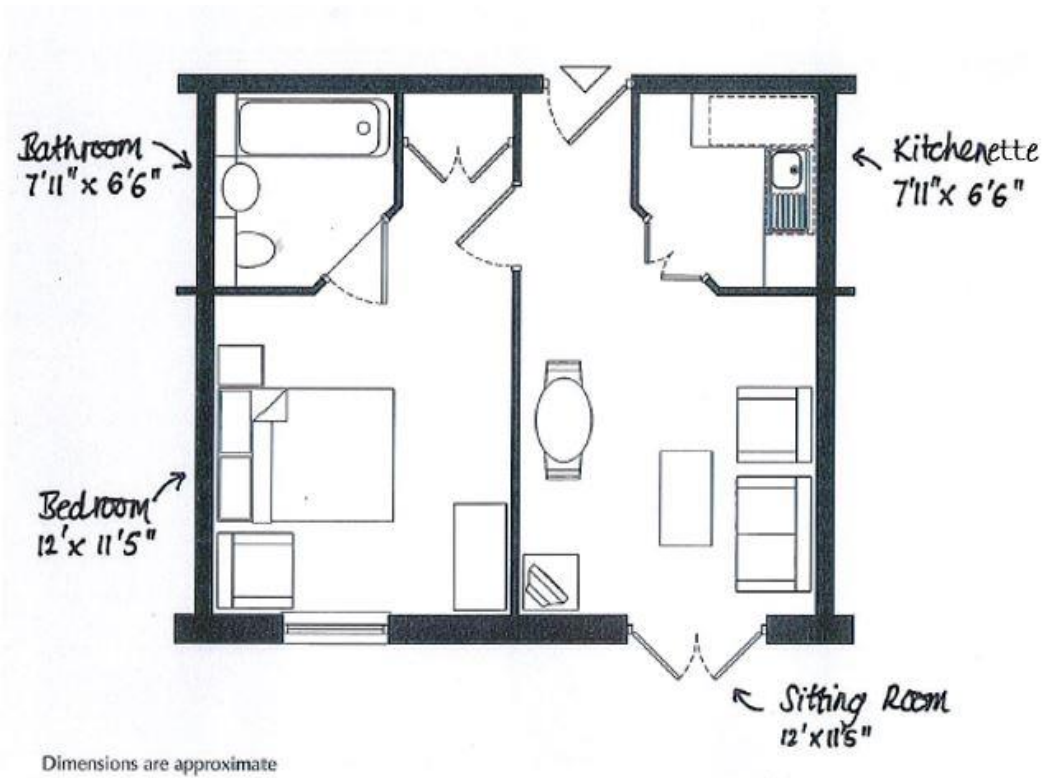




RICHMOND BEDE VILLAGE

Floorplan of a typical Suite at Richmond Bede Village



Richmond Bede Village, Hospital Lane, Bedworth, Warwickshire CV12 0PB
Tel: 02476 645544 Email: info@richmond-villages.com www.richmond-villages.com/bede

Richmond Villages Operations Limited, Company No: 4779288, England.
Registered Office: 1 Angel Court, London, EC2R 7HJ, United Kingdom

