

Village Apartment

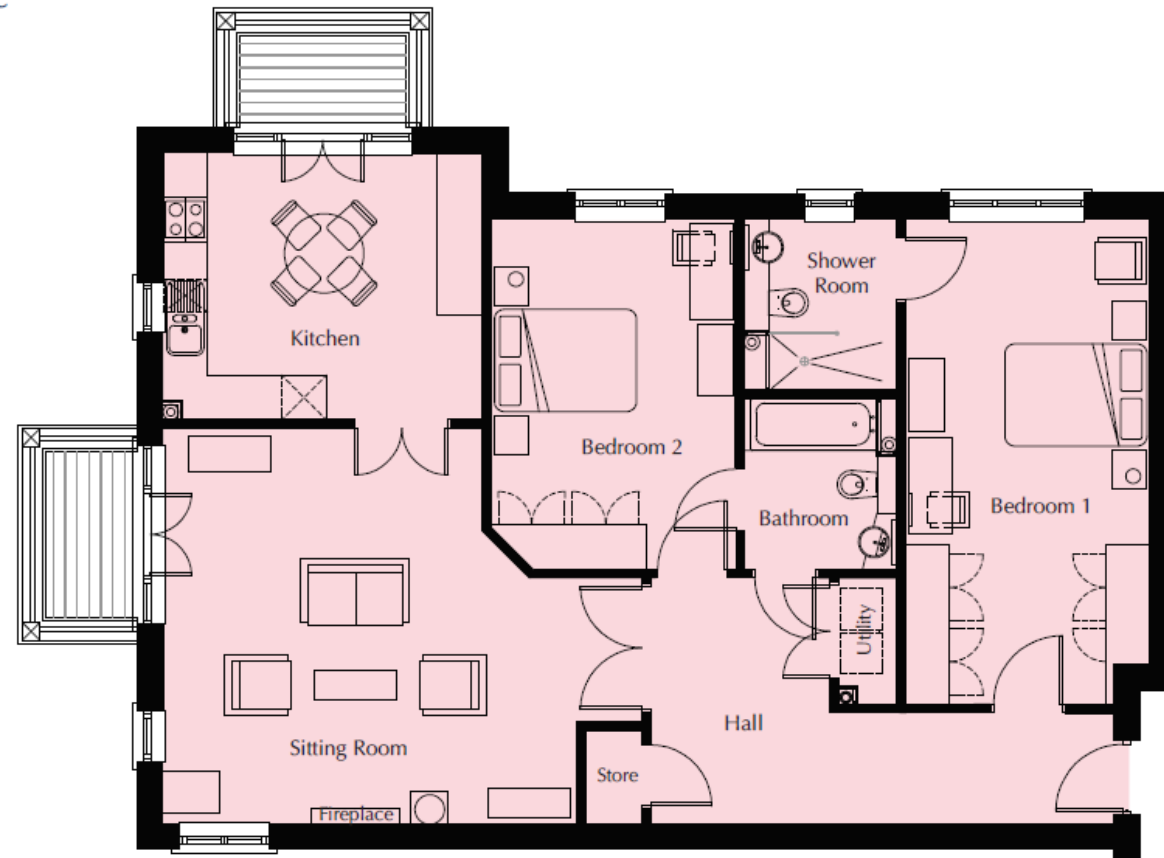
Plot Number | 39

Postal Address | 10 Ashfields Grove

First Floor | 111.2m² – 1197ft²



- Kitchen**
4300mm x 3600mm
14'1" x 11'10"
- Sitting Room**
6450mm x 5335mm
21'2" x 17'6"
- Bedroom 1**
6535mm x 3270mm
21'5" x 10'9"
- Shower Room**
2300mm x 2050mm
7'7" x 6'9"
- Bedroom 2**
4715mm x 3265mm
15'6" x 10'9"
- Bathroom**
2300mm x 2050mm
7'7" x 6'9"



These particulars are intended to give a fair and substantially correct overall description.

Measurements have been taken at 1500mm skirting height.

All dimensions are approximate. Bedroom measurements include the wardrobe if applicable. Room measurements include bay windows if applicable.

Furniture layout is to give an indicative impression. Although all efforts have been made to ensure its accuracy at time of print dimensions, fixtures, fittings, finishes and specifications are subject to change without notice.

