

The Avenue 11

Floor 1 | 65.43m² – 704.28ft²

Kitchen

3179mm x 3029mm
10'5" x 9'11"

Sitting Room

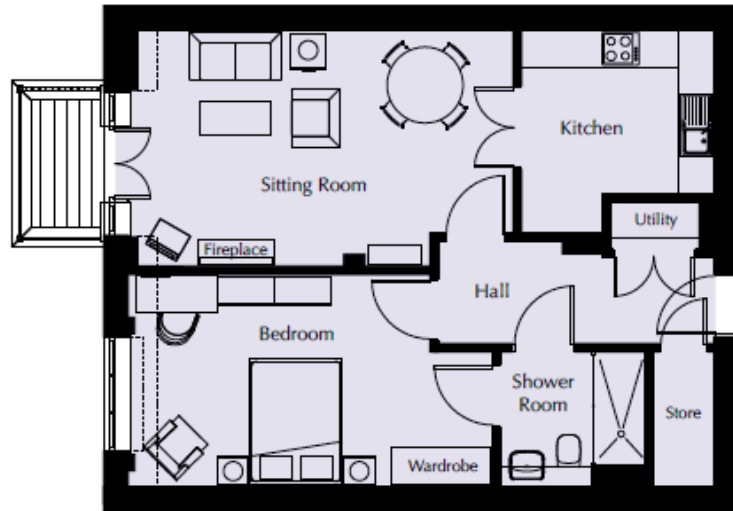
5980mm x 3742mm
19'7" x 12'3"

Bedroom

5739mm x 3361mm
18'10" x 11'

Shower Room

2300mm x 2180mm
7'7" x 7'2"



These particulars are intended to give a fair and substantially correct overall description.

Measurements have been taken at 1500mm skimming height.

All dimensions are approximate. Bedroom measurements include the wardrobe if applicable. Room measurements include bay windows if applicable.

Furniture layout is to give an indicative impression. Although all efforts have been made to ensure its accuracy at time of print dimensions, fixtures, fittings, finishes and specifications are subject to change without notice.

