

Village Suite 13

Ground floor | 93.38m² – 1005ft²

Kitchenette

2542mm x 2153mm
12'5" x 7'7"

Sitting Room

6285mm x 3655mm
20'6" x 11'9"

Bedroom 1

6285mm x 3655mm
20'6" x 11'9"

Shower room

2543mm x 2153mm
8'3" x 7'

Bedroom 2

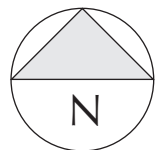
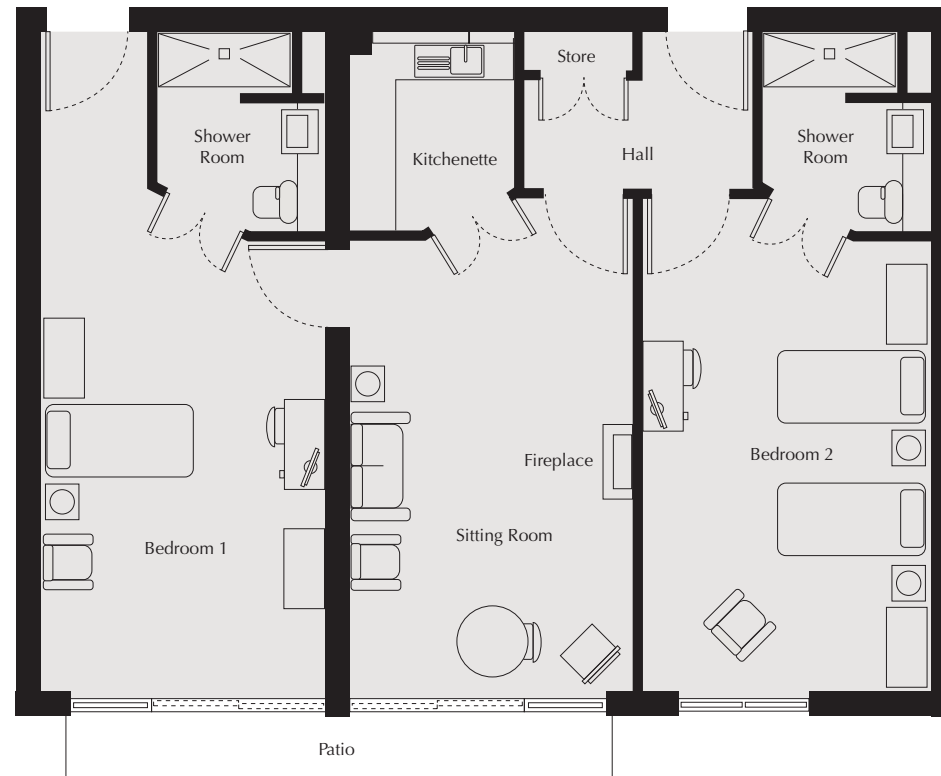
6285mm x 3655mm
20'6" x 11'9"

Shower room

2543mm x 2153mm
8'3" x 7'

Patio Area

7000mm x 2500mm
13' x 8'2"



These particulars are intended to give a fair and substantially correct overall description. All dimensions are approximate.

Furniture layout is to give an indicative impression and although all efforts have been made to ensure its accuracy at time of print; fixtures, fittings, finishes and specifications are subject to change without notice.

All properties are sold unfurnished.