

Village Suite

44

Floor 3 | 41.58m² – 447.56ft²

Kitchen

2300mm x 2130mm
7'7" x 7'

Sitting Room

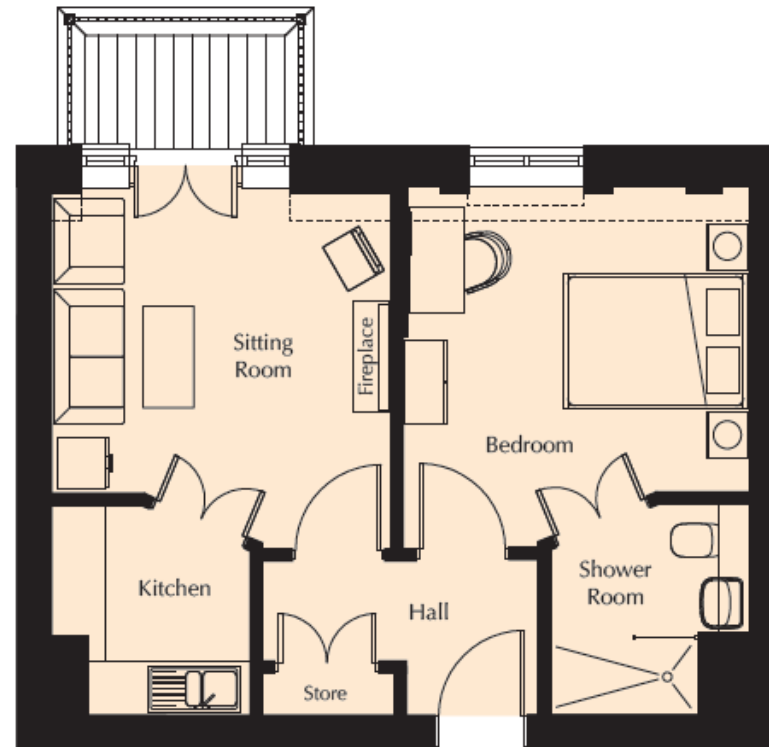
3843mm x 3648mm
12'7" x 12'

Bedroom

3916mm x 3715mm
12'10" x 12'2"

Shower Room

2300mm x 2180mm
7'7" x 7'2"



These particulars are intended to give a fair and substantially correct overall description.

Measurements have been taken at 1500mm skeliling height.

All dimensions are approximate. Room measurements include bay windows if applicable.

Furniture layout is to give an indicative impression and although all efforts have been made to ensure its accuracy at time of print; fixtures, fittings, finishes and specifications are subject to change without notice.

