

17 Coral Springs Way

Second Floor | 63.20m² – 680.3ft²

Kitchen

3775mm x 2050mm
12'5" x 6'9"

Sitting Room

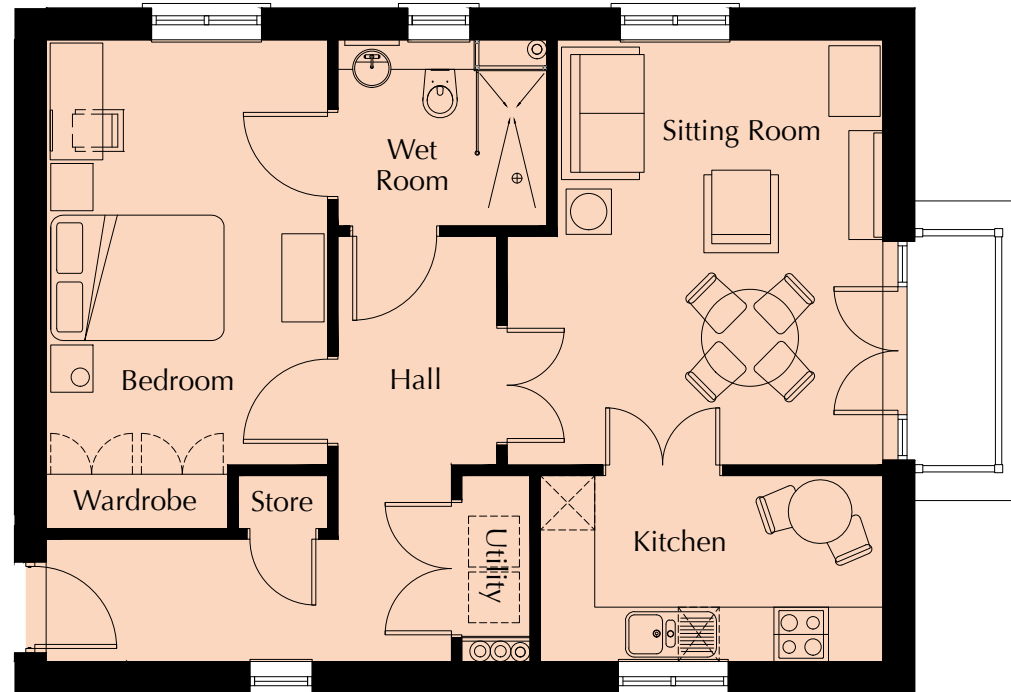
4686mm x 4140mm
15'4" x 13'7"

Bedroom

5386mm x 3100mm
17'6" x 10'2"

Shower Room

2300mm x 2050mm
7'7" x 6'9"



These particulars are intended to give a fair and substantially correct overall description.

Measurements have been taken at 1500mm skirting height.

All dimensions are approximate. Bedroom measurements include the wardrobe if applicable. Room measurements include bay windows if applicable.

Furniture layout is to give an indicative impression. Although all efforts have been made to ensure its accuracy at time of print dimensions, fixtures, fittings, finishes and specifications are subject to change without notice.

The properties are sold unfurnished.

